



Ashdown Park

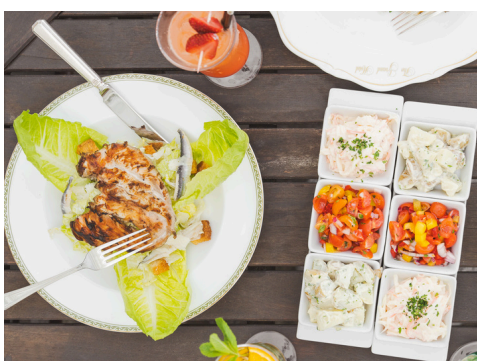
HOTEL AND COUNTRY CLUB

★★★★

Country Club Summer Barbecue

Wednesday 18th June 2025, 7pm – 11pm

Summer House | £37 Members £42 Guests



A welcome glass of Pimms, followed by a barbecue dinner with one glass of house wine per person.

Prime Beef Burger served in a Brioche Burger Bun

Beyond Meat Burger served in a Brioche Burger Bun (PB)

Pork Cumberland Sausage served in a Warm Hot Dog Roll

Moho Marinated Chicken Skewers (Su)

Corn on the Cob, Soft Herb Butter (M)

Sliced Beef Tomato, Sliced Red Onion, Baby Gem Lettuce and Gherkins (Su)

Apple, Fennel, Mint Slaw (Mu) and Mint Buttered New Potatoes (M)

Mixed Baby Leaf Salad Selection of Bread Rolls (G)

Strawberries and Whipped Mascarpone Cream (M)

Rich Chocolate and Raspberry Tart (G,E,M)

Kindly make your booking at the Country Club reception.



Ashdown Park | Wych Cross | Nr Forest Row |
East Sussex | RH18 5JR
01342 824988

